

Community  
of Caring®

# NEWS

w i n t e r 2 0 0 2

## Inside

A Message from Mrs. Shriver	2
A Message from the Executive Director	3
Teen Pregnancy Prevention	4
Curriculum Ideas	5
Highlights from Around the Country	6-7
MR Report	8
2002 National Conference	9-11
Community of Caring Online	12
Merchandise	13-14
Staff Development Options	15

caring

respect

responsibility

trust

family

# A Message from the Chairman



Dear Colleagues:

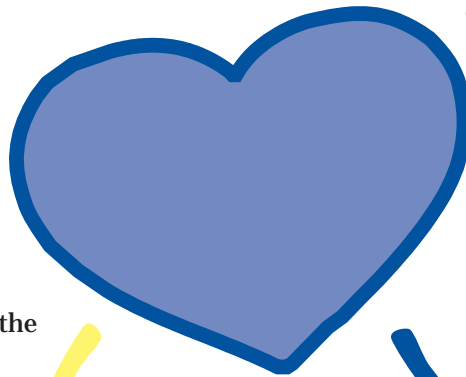
I am especially pleased to write to you today on the topic of teen pregnancy prevention, which is being highlighted in this issue of our newsletter. Because of the tragic, causal links between teen pregnancy, low-birth-weight babies,

and mental retardation, the Kennedy foundation's interest in this issue has been long and heartfelt. The very first Communities of Caring were created to care for pregnant teens by providing the kind of nurturing atmosphere, based on values, that young women need in order to care for themselves, for their children and for their futures.

When Community of Caring became a school based, K-12 program, the focus on teen pregnancy shifted from care to prevention. In addition to teen pregnancy prevention, schools implemented Community of Caring for a broader spectrum of reasons—including character education, improvement in the social and academic climate of the school, and prevention of violence and drug and alcohol use. However, the focus on teen pregnancy prevention has never diminished. Today, using Community of Caring's sexuality curriculum, *Understanding Your Sexuality and Your Choices*, Community of Caring schools in five states have received grants under the Federal Abstinence Education program. Many other Community of Caring schools throughout the country also include this curriculum—as well as our text, *Growing Up Caring*—as important elements of their Health, Life Skills and Human Sexuality programs.

The appropriateness of Community of Caring's emphasis on abstinence as the best choice for young people has recently received impressive validation from a nationwide survey conducted by the National Campaign to Prevent Teen Pregnancy. The survey showed that over

90% of adults *and* teens believe that teens need to be given a stronger message from society that they should abstain from sex until they are at least out of high school. A substantial majority also said that sexual activity for high school-age teens is not acceptable, even if precautions are taken against pregnancy and STDs, and two thirds of teens under 18 who have had sex, said they wished they had waited longer. The survey further showed that teens consistently overestimate the percentage of high school students who engage in sexual activity; and—in a surprise to some parents—teens reported that parents influence their sexual decisions more than anyone else does.



All of this information is extremely important for teens to know. The power of Community of Caring is that, using Community of Caring's components, the information can be delivered, not just through a single course on sexuality, but through a variety of means such as teen forums, family nights, values discussions in the classroom, and other activities typically conducted in Community of Caring schools—all of which make the message more available and more acceptable to young people.

In closing, I will say that while the news we hear of a declining teen pregnancy rate is certainly encouraging, the fact remains that the U.S. rate is still among the highest in the world. Add to this the alarming spread of sexually transmitted diseases as well as the ongoing problem of developmentally delayed babies born to teen mothers, and it becomes indisputable that the role Community of Caring plays in reducing teen pregnancy truly does remain among its most important and far-reaching.

Sincerely,

Eunice Kennedy Shriver

# A Message from the Executive Director



Dear Colleagues:

This year marks the 20th anniversary of Community of Caring. It has been 20 years since Eunice Kennedy Shriver pioneered in the field of values education. She began Community of Caring as a different way of addressing teen

pregnancy prevention: by supporting young people in their needs to be part of a caring school community, and by teaching core values. This approach, which began because of her belief that other strategies at the time were not addressing the roots of the problem, worked, and what started as a clinic program in partnership with Johns Hopkins Hospital eventually evolved into a school-based, comprehensive K-12 character education program for all students.

It was groundbreaking work at the time, and that original purpose is still what makes Community of Caring unique today among character education programs: its focus on the whole school environment and including all students, and its focus on integrating the five core values of caring, respect, responsibility, trust and family into every aspect of school life, including the curricu-

lum. In addition, these five core values were identified through a consensus process by a group of philosophers, educators, health specialists, legal professionals, ethicists, policy makers and psychologists. These core values are really human values, because they define what it means to be human. They are also deeply felt American values, finding expression in our founding documents, and in our vision of a nation that struggles to live out these values in every aspect of our shared public life, and in our private lives.

Mrs. Shriver was ahead of her time when she founded Community of Caring in 1982. She believed that for children and young people to grow up healthy, capable and caring, these values would serve as guideposts for helping them make good decisions that respect themselves and others, as well as the rights of others. Because our children cannot succeed as students, citizens, parents or community leaders, until they first succeed as human beings.

Sincerely,

Kristin Fink

## Teen Pregnancy Prevention Strategies

In order to reduce teen pregnancies effectively, in Community of Caring schools, it is fundamentally important to create a dialogue with the teens themselves. Purposely involving a diverse group of students in teen forums, values discussions, service learning and after-school programs, are all key ways to reduce teen pregnancies effectively, while providing invaluable leadership opportunities for participating teens. The National Campaign to Prevent Teen Pregnancy (NCPTP), [www.teenpregnancy.org](http://www.teenpregnancy.org), offers the following excellent suggestions:

- Involve teens early in the planning of your goals and activities.
- Let teens be your ambassadors to understanding youth culture.
- Provide teens with the appropriate training and information and make them feel responsible for projects.
- Work with teens to make risky sexual behavior "unhip."
- Encourage teens to be media and community spokespersons.
- Give teens a voice with policymakers and community leaders.
- Use creative methods to deliver messages and engage teens.



*Members of Promoters of Health, a student group from Nogales High School in La Puente, CA, use skits to examine issues of teen health and pregnancy prevention.*

# Teenage Pregnancy Prevention

Service learning is a research-based strategy for teen pregnancy prevention. The following story describes Utah Community of Caring programs' efforts to support the Olympic Winter Games through acts of service.

## Blanket Project

### Ogden City School District, Ogden UT

What began as a suggestion made by a group of peer leaders to Community of Caring coordinator Eileen Nicholas during a Peer Leadership Training, became the major task of making a blanket for each of the Olympic and Para-Olympic athletes competing in Salt Lake City in 2002. Ogden City School District students already had experience making unique fleece blankets as part of a service project for the disenfranchised in the Ogden community. The students decided to do so for each of the approximately 4,300 Olympic and Special Olympic athletes. Despite the enormity of the undertaking, the students believed in the strategic plan's dictum that "people working together toward a common goal will accomplish anything."

In that spirit and with the strategic objective that all students volunteer their time to contribute to the local and global community, the students began the tasks of making, preparing, boxing and securing funds to pay for the blankets. Along with seed money from appropriate grant sources in different areas of the state, the students raised funds through donations from the Swanson and St. Benedict's Foundations and through many small private,

student and family donations. A fabric store supplied nearly 7,000 yards of material featuring a pattern of all the Olympic venues in the colors of the Olympic rings, which was sewn by students, families, teachers and volunteers.

As the project gained momentum, schools in Granite and Salt Lake Districts, led by Chris Campbell Gremler and CeCie Scharman, joined to help expand the effort statewide. They logged over 10,000 hours of service and completed nearly 6,000 blankets. The Utah House of

Representatives and Utah Governor's Office issued separate proclamations, commending the students and staff for their unselfish service that "has made Utah a better place in which to live." In a recent presentation on this Community of Caring project to the Utah Governor and House of Representatives, the project leaders received a standing ovation for their contribution to the Olympic effort. Through their tireless efforts and resolve, all involved in the project have demonstrated to guests from other states and around the world what can be accomplished through hard work, responsibility and caring.

*Utah State Representative Duane Bordeaux, Eileen Nicholas and Governor Mike O. Leavitt at the Utah House of Representatives*

*Mother and son work together to make a blanket.*



## The Missouri Community of Caring Project

"Abstinence demonstrates morals and high expectations for self" were the words of one of the students taking part in the Missouri Community of Caring project. The project, coordinated by Penny Keith, involves 30 schools throughout the state of Missouri implementing the Community of Caring five core values, components and 14 lessons from *Understanding Your Sexuality and Your Choices*. The goals of the Missouri Project include:

- Decreasing adolescent sexual activity until marriage, while promoting the social, psychological and

health gains of abstinence and enhancing parent-child interaction.

- Increasing students' knowledge and skills that will cultivate healthy attitudes and support good decision-making.
- Involving families, parents, schools, community based organizations, governmental agencies, businesses, and individuals in supporting positive youth development in their community.

# Curriculum Idea

## Community or Caring Character Bulletin Board

*Community of Caring invites you to participate in an on-going series of curriculum ideas and activities for teachers to use in and out of their classrooms. The following activity was designed by Ron Axelrod, International Baccalau-*

*reate Coordinator and lead teacher of Robinson Secondary School in Fairfax, VA. Ron is also a member of the Community of Caring Board of Directors.*

We invite you to create a Community of Caring Character Bulletin Board in your school or classroom.

Encourage your students to produce one of the following works using individuals they know personally, have read about in literature, or studied in history or current events:

- a. Story with a protagonist who represents an example of one of the five Community of Caring core values.
- b. Essay examining how an individual demonstrated one of the five Community of Caring values.
- c. Picture that represents an individual demonstrating or reflecting one of the five core values.
- d. Photograph with captions describing how an individual demonstrated one or more of the five core values.
- e. Cartoon strip pointing out how an individual demonstrated one or more of the core values.

Create a bulletin board that displays the students' work. Use the stories, essays, pictures, photographs and cartoons as a way of discussing the following questions:

- a. What does it mean to be a person of character? A community of character?
- b. How do the five Community of Caring core values influence the lives of all who live within the community?
- c. What person(s) displayed on the bulletin board do you admire? Why?

Take photographs of your bulletin board and send them to us at the Community of Caring office. We will put as many of them as possible in our next newsletter and show the rest at our national conference this summer in Dallas.

We hope that you will all participate in this Community of Caring-wide activity!

Student responses to how Community of Caring lessons affected their attitudes toward abstinence, and how Community of Caring affected their decision-making concerning abstinence were tabulated. Results indicated that students expanded their definitions of abstinence and identified the characteristics of good relationships. Students also identified long-term consequences resulting from early sexual involvement among teens as reasons why they chose not to have sex. Lesson discussions, panel presentations and service projects were

important activities that students said helped them develop different perspectives for themselves and others. According to one student, "I...knew kids should not do certain things, but Community of Caring helped me believe we should be that way. Community of Caring has helped me be more open."

# Highlights from Around

## UPPER MERION WELCOMES MRS. SHRIVER

On November 7, 2001, Community of Caring founder and Honorary Chairman Eunice Kennedy Shriver and Executive Director Kristin Fink paid a visit to Upper Merion Area Middle School in King of Prussia, PA. They were welcomed by Principal John Adiletto, Assistant Principals Karen Rohrbach and Felicia McAllister, and Lead Teachers Melissa Edge and Joy Power, to attend the school's Unity Day ceremony and kickoff their Community of Caring program. It was truly a wonderful day of events, a celebration of caring, unity and the school family. The day began with the unfurling of a 26-foot flag bearing the handprints of more than 1,200 students, teachers and others from the school. Several students later read essays they had written on what the five core values meant to them. Mrs. Shriver visited many classrooms and had a wonderful time interacting with students and watching students buddy-up to teach one another.

The centerpiece of the day's events was a sleuthing activity in which students had to guess the identity of a mysterious historical figure using "artifacts" placed in their classroom. The artifacts, including a map of Calcutta, India, a swatch of fabric, and a bar of soap, provided clues to the person's identity. Eventually, the clues revealed the person to be Mother Theresa. Teachers then explained how each artifact represented an aspect of her life. The soap, for instance, was selected as a reminder of the many poor and sick residents of Calcutta whom she washed by hand.

Using Mother Theresa's life as an example, the students continued to explore the themes of service and caring throughout the rest of the day. Mrs. Shriver listened to students discuss the importance of the core values and spoke to the school about volunteering and teaching compassion. Students also were asked to reflect on the values in the story *Bearstone* and then write about the values in their journals. It was an inspirational day of caring and sharing.



Eunice Kennedy Shriver at Upper Merion Area Middle School, King of Prussia, PA

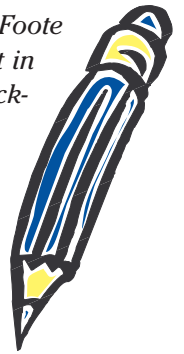
## RINCON INTERMEDIATE SCHOOL WEST COVINA, CA

Approximately 200 7th and 8th grade students participated in an eleven-week Guidance Group program conducted by Beverly Heap, the school's counselor. Groups met once per week to discuss such topics as Getting Along With Others, Conflict Resolution, Peer Pressure, Problem-Solving and Self-Esteem. The groups were conducted October through December.

Parents were very supportive of this program and helped it succeed. They signed up their child for the group at the beginning of the school year. At the final group meeting in December, students wrote a letter to their parents letting them know how many times they attended the group meetings and what they learned in the group. Students celebrated their participation with a pizza party in January.

## FORT FOOTE ELEMENTARY SCHOOL FORT WASHINGTON, MD

Lauren Fells, a 5th grade student at Fort Foote Elementary in Fort Washington, MD, sent in the following article about the annual kickoff for the school's Community of Caring program, "Hands Around Fort Foote."



On September 26, 2001, Prince George's County Blue Ribbon School, Fort Foote Elementary, did peaceful things for the school. This was the school's sixth annual "Hands Around Fort Foote" celebration. The students wrote wonderful letters to Dr. Metts, the Superintendent of Prince George's County Public Schools. The letters were about what peace meant to the students. The students gave the school a big hug by singing "God Bless America" and the Fort Foote Alma Mater. They also held hands and raised them.

In the morning, the students and teachers went outdoors to plant a tree for their grade level. The trees were donated by Dennison's Nursery. In the late afternoon, there was a tree-planting ceremony for those lost in the tragedy that happened on September 11, 2001.

# the Country

## CAMPTON ELEMENTARY PLYMOUTH, NH

In October, Campton Elementary students and faculty participated in an overnight walk for cancer event sponsored by Plymouth State College. The

## CAPE HATTERAS SECONDARY SCHOOL CAPE HATTERAS, NC

Middle school students at Cape Hatteras Secondary School have been working with three and four-year-old preschool students at the Munchkin Academy as part of the WINGS program. WINGS is a "learning to learn" system, designed to increase the cognitive and language skills of pre-school children, using games and play to stimulate learning.

Lead Teacher Jean Taylor adapted the program for her Community of Caring because it focuses on service learning and gives younger students a chance to bond with older students. Both older and younger students hone reading skills, build self-confidence, learn social skills and the role of mentoring.

Campton Elementary, Plymouth, NH



Cape Hatteras Secondary School, Cape Hatteras, NC

benefit entitled, "Keeping You, Me, and Memories Alive," included fund raising efforts, overnight relay teams, and paper bag luminaries that could be purchased in memory of a loved one or to honor a loved one currently involved in the cancer walk. The luminaries were placed around the athletic field and on the bleachers to spell out "HOPE." Eighty percent of the school's staff took part in the event and Community of Caring raised in excess of \$2,000 with the participation of partner Community of Caring school, Holderness Central School and community members.

## JOY *By Katy Ballenger*

While a teenager, if someone mentioned the word "service project," I would run and hide. I was caught up in my self-absorbed world, hanging out with friends, worrying about homework and boys, and thought "service projects" consisted of raking leaves or cleaning - two chores I despised! It was not until I met Joshua that my world changed.

I was 15 and Joshua was three. I was a teenager searching for the meaning of my existence and Joshua was dying of a terminal illness. He was a patient at Primary Children's Medical Center in Salt Lake City, UT and I was the candy striper on duty. (My friend had convinced me that this would be fun -- she probably didn't mention the word service project). The elevator doors opened on Level 5 and I stepped onto the

Child Life floor. Immediately, a nurse pulled me aside and told me about Joshua. She told me about him not wanting to play with his toys, not laughing and not smiling. Then, pointing a finger in my direction, she stated, "I want you to do something about it!" "Me," I thought, "What could I do?" I timidly walked into Joshua's room and introduced myself. That started our day filled with adventures of treasure hunts around the hospital, playing in the water fountain outside, making castles on the linoleum floor and singing songs. When it was time to leave that day, Joshua had played, Joshua had laughed and Joshua had smiled. While it was an adventure for Joshua, for me it was the realization that one person can make a difference. Something happened to me that day. I had stepped far beyond my comfort zone to give a

little something back. For an entire day, I was not just happy, but JOYFUL! Completely forgetting about my simple problems, I had learned the universal lesson of reciprocity. When you give, you receive. A sick little boy gave me a gift that day that changed my life -- he taught me how to love and to give.

We each have the opportunity to obtain and offer this precious gift. As we serve others, we obtain and as we allow ourselves to be served, we offer. How rare and precious this invaluable action is that is not motivated by monetary gain. It is up to each of us to make it a priority to make a difference and serve others. As we will consistently mold our lifestyles into ones where we learn to see the needs around us and do something about those needs, we will lead lives filled with JOY.

*Katy Ballenger has a long history with Community of Caring. As a high school student in a Community of Caring school, she began the HUGS club (Help Us Give Service), now an international service club for which she won the Prudential Award. She also is a featured student in the Community of Caring video, "Five Words that can Change Your Life." Katy went on to become Miss Teen of America and now speaks at student assemblies on the importance of values.*

# Report Suggests Community of Caring Has Positive Effect on Attitudes towards Students with MR

As part of the ongoing effort by Community of Caring to assess how our program affects students with mental retardation, we commissioned Dr. Ann Higgins-D'Alessandro of Fordham University to conduct research on the topic during last summer's Community of Caring National Conference.

Initially, a focus group was held to determine in a general sense how parents, students and educators in Community of Caring schools viewed students with mental retardation and how they would describe the factors that inhibit these students' full participation in school life. The focus group discussed issues such as designing and implementing opportunities for social inclusion, where and how students are currently included, and staff and student reactions to social inclusion, among others.

What emerged from the discussion was a generally optimistic view from students who supported social inclusion, saying that they thought students with mental retardation enjoyed being part of the larger group and that overall it was "no big deal" to have them there. They added, however, that in addition to opportunities for inclusion, a certain degree of education was necessary to make it work. Teachers agreed with this second point and urged that wherever appropriate the disabled students themselves should be given opportunities to explain the disability.

Giving specific examples, teachers, principals, students and parents all agreed that implementing Commu-

nity of Caring had propelled them to work toward practices that are more inclusive for students with mental retardation, but the educators in the group warned that true acceptance takes time and a lot of work.

In addition to the focus group, a survey was administered to conference participants to determine whether perceptions of students with mental retardation differed between Community of Caring and non-Community of Caring schools.



Two hundred and thirty-five conferees responded to the survey, 74% of whom indicated that they were from Community of Caring schools. The survey consisted of 40 questions designed to compare the attitudes of teachers toward students with mental retardation in Community of Caring versus non-Community of Caring schools.

Results of the survey included the following:

- Community of Caring teachers and principals had significantly more positive attitudes toward students with mental retardation than those who were not involved in Community of Caring programs.
- Community of Caring staff felt their students were more willing to have personal friendships with students with mental retardation than did staff from other schools.
- Community of Caring staff had significantly more positive attitudes about the ability of students with mental retardation to exhibit appropriate behavior, like self-control, and further believed that the notion that prejudice exists against students with mental retardation was not an exaggerated one.
- Finally, those involved in Community of Caring rated their students' views of school culture as more positive in the areas of student relationships, teacher-student relationships and educational opportunities as compared to those respondents not involved in Community of Caring.

This is a small study, but the consistency of its findings suggest that, although it may not be the sole cause, Community of Caring has had a real and positive influence on the attitudes of school staff and students toward students with mental retardation.

# Community of Caring Puts on its Boots and Spurs



Community of Caring is pleased to invite you to the 2002 Community of Caring National Conference on June 28 – 30, 2002, with pre-conference sessions on June 27, at the historic Hotel Adolphus in the Star City of Dallas, Texas. The theme of the conference will be “Community of Caring: An Invitation to Character,” which will serve as an opportunity to welcome those new to character education and expand the depth and breadth of knowledge of those familiar with Community of Caring.

This is the first Community of Caring conference in Dallas, Texas, and it promises to be a terrific one. The historic Hotel Adolphus was founded in 1912 and features a gorgeous lobby sitting room with one of America's finest art and antique furnishings collections. Featuring high-quality guest rooms and first-class amenities, the Adolphus is located in the heart of Dallas' downtown, near business headquarters and cultural attractions.

This year's conference promises to be an inspiring educational event and will provide participants with a comprehensive program. Featured speakers at the conference will include Dr. Eli Newberger, pediatrician at Harvard Medical School and author of *The Men They Will Become: The Nature and Nurture of Male Character*, and Dr. Diane Berreth, deputy executive director of the Association for Supervision and Curriculum Development and co-founder of the Character Education Partnership. Peter Yarrow of the folk group Peter, Paul and Mary, will perform his inspirational program “Don't Laugh at Me.” Conference topics will cover the Community of Caring components as well as numerous subjects of interest and concern to today's character educators. Sessions that address the needs of students with mental retardation will be given. The conference is also a great networking opportunity and a chance to meet with fellow educators from across the country to share ideas and best practices.

New this year, we are offering a menu of six pre-conference sessions! These workshops will occur concurrently and cover a wide range of subject matter of interest to both those new to and those already familiar with Community of Caring. Sessions will include Community of Caring 101, The "Nuts and Bolts" of Planning a Secondary Student Forum, Elementary Student Forums, Re-Energizing Your Community of Caring, Including Students with Mental Retardation and Other Disabilities, and Understanding and Strengthening the Character of Boys.

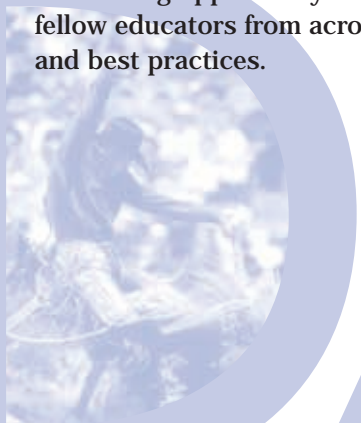
Anyone involved in the school community – teachers, principals, administrators, guidance counselors, support staff, students, parents and community leaders is invited to attend. A special early bird rate of \$265 for Community of Caring Schools and \$295 for non-Community of Caring Schools is available for those registering by March 15, 2002. Attendees can take advantage of discounted rates through American Airlines, Budget Rent-A-Car, and SuperShuttle for transportation to and from the airport.

Remember, space is limited, so make sure to reserve your spot as soon as possible! For more information and continual updates, please keep checking our website, [www.communityofcaring.org](http://www.communityofcaring.org). Join Community of Caring in Dallas this summer!

## 2002 Awards

The annual Community of Caring awards will be presented during the national conference. These awards recognize teachers, administrators, staff, parents, students, or community members who have made outstanding contributions to creating Communities of Caring.

Now is a great time to think about who might deserve an award in your community. An award nomination form is located on page 11, so get those nominations in!



# DALLAS



**Community  
of Caring®**

FOUNDED BY THE JOSEPH P. KENNEDY, JR. FOUNDATION

# National K-12 Character Education Conference

Hotel Adolphus  
Dallas, Texas

June 28 - 30, 2002

Pre-Conference Sessions, June 27, 2002

Mr.     Ms.     Dr.

Name \_\_\_\_\_

Job Title \_\_\_\_\_ Organization/School \_\_\_\_\_

Work Address \_\_\_\_\_

City \_\_\_\_\_ State \_\_\_\_\_ Zip \_\_\_\_\_

Phone \_\_\_\_\_ Fax \_\_\_\_\_ E-mail \_\_\_\_\_

**LEVEL OF INTEREST:**     Elementary     Secondary     Both

**GENERAL REGISTRATION\*:**

	Community of Caring School Rate	Non-Community of Caring School Rate
Early Bird Registration: must be postmarked by March 15, 2002	<input type="checkbox"/> \$265	<input type="checkbox"/> \$295
Regular Registration: must be postmarked between March 15 and May 24, 2002	<input type="checkbox"/> \$288	<input type="checkbox"/> \$320
Late Registration: postmarked after May 24, 2002	<input type="checkbox"/> \$315	<input type="checkbox"/> \$350

*General registration fees include general conference registration, materials, opening reception (6/28), breakfasts (6/28, 6/29, and 6/30), and lunches (6/28 and 6/29). The conference will run on the full days of June 28 and June 29 and the morning of June 30.*

- I am new to Community of Caring. Please send me introductory information before the conference.
- I will require special access to conference facilities.
- I would like vegetarian meals.

**PRE-CONFERENCE REGISTRATION:  
(June 27): (choose only one)**

	Community of Caring School Rate	Non-Community of Caring School Rate
Community of Caring 101	<input type="checkbox"/> \$54	<input type="checkbox"/> \$60
Student Forums – Secondary	<input type="checkbox"/> \$54	<input type="checkbox"/> \$60
Student Forums – Elementary	<input type="checkbox"/> \$54	<input type="checkbox"/> \$60
Re-Energizing Your Community of Caring	<input type="checkbox"/> \$54	<input type="checkbox"/> \$60
Including Students with Mental Retardation and Other Disabilities	<input type="checkbox"/> \$54	<input type="checkbox"/> \$60
Understanding and Strengthening the Character of Boys	<input type="checkbox"/> \$54	<input type="checkbox"/> \$60

*(\*) - Community of Caring schools' rates are available to staff, faculty, students, or family members associated with (1) a school officially recognized by the Community of Caring National Office as a Community of Caring school as of the conference date, (2) a school that has an official Community of Caring on-site staff development scheduled on or before August 31, 2002, or (3) a district office overseeing a district that includes a significant proportion of officially recognized Community of Caring schools. Registrants who are unsure whether they qualify for the discounted rates should contact the Community of Caring national office.*

*Pre-conference sessions will run concurrently from 3:30 p.m. to 6:30 p.m. on Thursday, June 27. Space is limited and general registration is required.*

**TOTAL AMOUNT:** \_\_\_\_\_ **Community of Caring School/Organization Associated With (required for Community of Caring Schools Rate):** \_\_\_\_\_

**FORM OF PAYMENT:**

- Check Enclosed
  - Purchase Order Number: \_\_\_\_\_ (please enclose copy of purchase order)
  - Credit Card     Visa     Mastercard     American Express
- Number \_\_\_\_\_ Exp. Date \_\_\_\_\_ Signature \_\_\_\_\_

Full payment is due at time of registration. Please note space is limited. All cancellations must be made in writing. Refunds will be made only for cancellations received by June 1, 2002, and are subject to a \$25 processing fee

**PLEASE MAKE CHECKS AND PURCHASE ORDERS PAYABLE TO:**  
Community of Caring, Inc.

MAIL REGISTRATION AND PAYMENT TO:  
Community of Caring  
c/o Event Solutions Unlimited  
P.O. Box 32862  
Baltimore, MD 21282  
Fax: (410) 559-2217

**QUESTIONS ABOUT REGISTRATION?**

Please call (800) 937-8728 or e-mail info@yesevents.com

For all other questions and inquiries, contact the Community of Caring national office at:  
1325 G Street, NW, Suite 500  
Washington, DC 20005  
Tel: (202) 393-1251  
E-mail: contact@communityofcaring.org

# Community of Caring Annual Awards

The Community of Caring national office is seeking nominations for the annual Community of Caring awards. These awards recognize teachers, administrators, staff, parents, students, or community members who have made outstanding contributions to Community of Caring. Recipients are selected by a screening committee and will be honored at the 2002 Community of Caring National Conference in Dallas, TX. Recipients must be associated with a Community of Caring program.

Any student, parent, educator, community, school organization, or any other interested citizen may submit nominations. Official nomination forms must be submitted no later than May 03, 2002.

This form may be duplicated and distributed to all appropriate individuals. Submit completed forms by fax to (202) 715-1146 or by mail to Community of Caring, Attn: 2002 Awards Nominations, 1325 G Street NW, Suite 500, Washington, DC 20005.

**NOMINATOR:**

Mr.       Ms.       Mrs.       Dr.

Name

Position

Organization

Address

City

State

Zip

Phone Number

Fax Number

E-mail Address

Relationship to Nominee

**The following person has made an outstanding contribution to Community of Caring:**

**NOMINEE:**

Mr.       Ms.       Mrs.       Dr.

Name

Degrees (if known)

Position or Grade Level

Organization

Address

City

State

Zip

Phone Number

Fax Number

E-mail Address

**Describe briefly why this person should be honored for his/her contribution to Community of Caring including the following criteria. Please use a separate sheet to provide this information.**

1. Specific achievements and/or outstanding service to Community of Caring.
2. Outstanding professional qualities in working with students, colleagues, parents, and community members.
3. Additional supporting comments or letters.

# Community of Caring Partners with Educational Impact Online!

As part of our commitment to continue bringing more resources and staff development opportunities to Community of Caring schools, we have recently collaborated with Educational Impact to produce the first character education online program in the country. The program features committed and talented lead teachers and coordinators from schools around the country sharing and showing how Community of Caring works in their school. Schools and districts interested in providing online staff development opportunities in Community of Caring should call (800) 849-2793 for more information.

## Online Staff Development for Educators



A research-based K-12 Character Education program that works!



A teacher at Taylor Elementary School has a discussion with her students about values.



Phyllis E. Williams Middle School service learning students create "thinking of you" cards for Hospice patients.



Special education students from Rowland Heights High School work in the school's cafe baking cookies for students. Many will be employed in the food service industry after graduation.

The acclaimed Community of Caring program, founded by Eunice Kennedy Shriver and the Joseph P. Kennedy, Jr. Foundation, illustrates how to successfully implement character education focused around the five core values of:

**Caring - Respect - Responsibility  
Trust - Family**

By working through Community of Caring Online, you will begin the process of:

- Integrating values across the curriculum
- Conducting student & community forums
- Implementing service learning projects
- Expanding family & community involvement
- Teaching abstinence lessons
- Creating a moral culture
- Enhancing social inclusion for students with physical and cognitive disabilities

**Exemplary Schools and Outstanding Practitioners discuss their experiences and share how they have gained success.**

Teachers and principals describe the coordinating structures needed to ensure success.

Site facilitators discuss how to generate faculty enthusiasm and develop a Coordinating Committee.

School Coordinating Committees describe their oversight function and preparation of a Comprehensive Action Plan.

Community of Caring Online will both jumpstart the Community of Caring process in your school and re-energize long standing Community of Caring programs!

Community of Caring is a registered trademark of Community of Caring Inc.  
Community of Caring - 1325 G Street NW, Suite 500 - Washington, DC 20005  
[www.communityofcaring.org](http://www.communityofcaring.org) - [contact@communityofcaring.org](mailto:contact@communityofcaring.org)

**Educational Impact**  
52 Orchard Road  
Hatboro, PA 19040  
(800)859-2793  
(215)325-9050  
[www.eionline.net](http://www.eionline.net)  
[info@eionline.net](mailto:info@eionline.net)

Program content: 20 hours

## MERCHANDISE

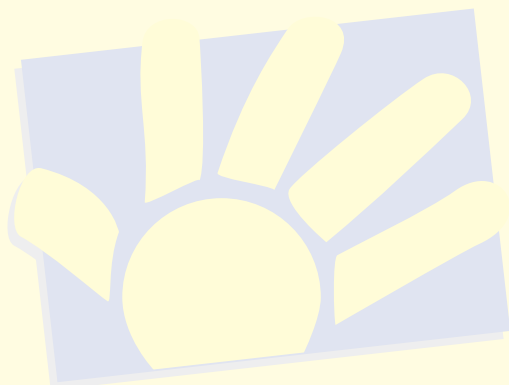
We are pleased to announce that all Community of Caring books are now available directly from the national office! The complete line of available materials is located on the form on page 14. *Understanding Your Sexuality and Your Choices* is available to everyone, however, the rest of the materials are available exclusively to Community of Caring schools. For more information on how to become a Community of Caring school and/or to start up Community of Caring at your school, contact us at (202) 393-1251.

The Community of Caring name and logo is a registered trademark. Please honor that trademark by ordering all merchandise through the national office. As always, if there is an item you do not see on the merchandise form, please give us a call. We will do everything in our power to accommodate customized items. In most cases, we can produce the product at a lower price than would be available to an individual school trying to produce the item independently. If you have any questions about policies related to the logo, contact the national office.

Remember that all domestic orders have shipping and handling fees of \$5.00 or 5% of the total order, whichever is greater. Please note that rush or interna-

**We would like to welcome schools  
in the following areas to our  
Community of Caring family**

Waynesboro, VA  
Syracuse, NY



tional orders will now have shipping and handling charges of \$20 or 20% of the total, whichever is greater.

On the order form, you will notice that we ask you to allow 2-3 weeks for delivery of the merchandise. It is best to order products as far in advance as possible, particularly if you are ordering in quantities of 75-100, or more. However, your orders will always be filled as promptly as possible.

## call for stories

***We are currently looking for news from Community of Caring schools across the country for the spring 2002 newsletter. We will be exploring how the Community of Caring logo functions as a unifying symbol for all school events.***

**Community of Caring: Where caring, respect, responsibility, trust, and family are taught and lived!**

### **Share with us your**

Examples of how your Community of Caring school is exploring one of the five values and/or how you have translated the meaning of the logo into action in your Community of Caring school.

### **Send them to**

Community of Caring  
1325 G Street NW, Suite 500  
Washington, DC 20005

Attn: Communications Department

e-mail: [contact@communityofcaring.org](mailto:contact@communityofcaring.org)  
fax: 202-715-1146 phone: 202-393-1251

**Submissions are accepted on a rolling basis**  
You do not have to write the article. Just send us the facts and highlights. We will do the rest!



# Merchandise Order Form

Bill to: \_\_\_\_\_  
 \_\_\_\_\_  
 \_\_\_\_\_

Ship to: \_\_\_\_\_  
 \_\_\_\_\_  
 \_\_\_\_\_

Attn: \_\_\_\_\_

Attn: \_\_\_\_\_

Phone: \_\_\_\_\_

Must be received by: \_\_\_\_\_

*Community of Caring merchandise is available exclusively to Community of Caring schools.  
 If you would like to become a Community of Caring school, contact us at (202) 393-1251.*

Product	Quantity/Size	Price**	Total
Grey T-shirt w/small full color logo on front	__ M __ L __ XL	\$10.00	
	__ XXL	\$12.00	
Blue T-shirt w/small gold logo on front	__ M __ L __ XL	\$10.00	
	__ XXL	\$12.00	
White T-shirt with slogan: "Children Need All Our Hands to Succeed," small full color logo on front	__ M __ L __ XL	\$10.00	
	__ XXL	\$12.00	
White T-shirt with slogan: "Creating Community Where You Are," small full color logo on front	__ M __ L __ XL	\$10.00	
	__ XXL	\$12.00	
Water Bottles, blue with COC logo and yellow top		\$3.00	
Lanyards, blue with gold lettering and key chain		\$5.00	
Click Stick Pens, yellow with blue lettering		\$1.00	
Backpacks, blue and gold lettering		\$15.00	
Message Pens, metallic blue, revolving five values		\$3.00	
Coffee Mugs, yellow with blue lettering		\$5.00	
Balloons, yellow, blue or white with one logo	__ Y __ B __ W	3 for \$1.00	
Pencils, blue with yellow eraser and logo		3 for \$1.00	
Key Chains, full color logo on one side, "Creating Community Where You Are" on other side		\$2.00 or 3 for \$5.00	
Umbrellas, white and blue alternating panels, logo on one panel		\$12.00	
Video, "Five Words That Can Change Your Life"	English____ Spanish____	\$5.00	
Wristwatch, black leather band with logo on face	Ladies____ Mens____	\$20.00	
Lapel Pin, full color logo		\$3.00	
Poster: "A Community of Caring School, where caring, respect, responsibility, trust and family are taught and lived."	12.5 x 19 English ____ Spanish____	\$5.00	
	25 x 19 English____ Spanish____	\$7.00	
	Magnets 2 x 3.5 (english only)	3 for \$1.00	
Value Cards Sets	Double sided, English/Spanish		
	Small (5.5 x 8.5) _____ Large (11 x 17) _____	\$5.00 \$9.00	
Customized T-Shirts: small full color logo on front, school or district name with slogan "Where Caring, Respect, Responsibility, Trust and Family are Taught and Lived," on back in blue.		Please call the national office for more information or to place an order for customized T-shirts.	
		<b>Subtotal:</b>	

Product	Quantity	Price**	Total
<b>How to Create a Community of Caring School*</b>		\$15.00	
<b>How to Create a Community of Caring Elementary School*</b>		\$15.00	
<b>Knowing About AIDS is Valuable Protection*</b> An instructional guide for middle, junior, and senior high school level teachers, with some activities for students		\$6.00	
<b>Implementing Community Service Projects*</b> A guide for teachers and administrators.		\$4.60	
<b>Planning and Implementing a Teen Forum*</b> A guide for teachers and administrators		\$3.40	
<b>Encouraging Family Involvement*</b> A guide for teachers and administrators		\$4.60	
<b>Understanding Your Sexuality and Your Choices</b> Lesson Plans and exercises for middle and junior high school teachers		\$14.00	
*Community of Caring books, except for <i>Understanding Your Sexuality and Your Choices</i> , are available exclusively to Community of Caring schools. If you would like to become a Community of Caring school, contact us at (202) 393-1251.	<b>Subtotal from page 14:</b>		
	<b>Shipping:</b>		
	<b>Grand Total:</b>		

\*\*Please allow 2-3 weeks for delivery, based on product availability. Prices and product line may be adjusted or discontinued without notice.  
Shipping charges of 5% of the total or \$5.00, whichever is greater, will be added.  
Rush & international orders subject to shipping charges of \$20 or 20%, whichever is greater.

**Mail or Fax to:**  
**Community of Caring, 1325 G Street, NW, Suite 500, Washington, DC 20005**  
**Fax: (202) 715-1146 Phone: (202) 393-1251**  
**ATTN: Merchandising Department**

## Staff Development Options

### *BECOMING A COMMUNITY OF CARING SCHOOL WORKSHOP:*

**Two Facilitators, Two-Day Workshop \$6,500**

**Includes:**

Up to 100 Participants  
 Basic Workshop  
 Development of Action Plan  
 Student Forum

**One Facilitator, Two-Day Workshop \$4,500**

**Includes:**

Up to 100 Participants  
 Basic Workshop  
 Development of Action Plan

**Two Facilitators, One-Day Workshop \$4,500**

**Includes:**

Up to 100 Participants  
 Basic Workshop

**One Facilitator, One-Day Workshop \$3,000**

**Includes:**

No More than 60 Participants  
 Basic Workshop

***ADDITIONAL ONE-DAY FOLLOW-UP WORKSHOPS* \$3,000**

*Choose TWO Topics from the Following Areas:*

- Student Forums
- Values Across the Curriculum
- Service Learning
- Family Involvement
- Getting Your Staff On Board
- Re-Energizing Your Staff in Community of Caring



1325 G Street, NW Suite 500  
Washington, DC 20005  
[www.communityofcaring.org](http://www.communityofcaring.org)

2002 Community of Caring  
National Conference

Register Online

[www.communityofcaring.org](http://www.communityofcaring.org)



Our logo signifies positive human growth and outreach by depicting both a hand reaching out and a sunrise. The five rays of light or fingers represent the five core values of the program.

**Community of Caring:  
Where caring, respect,  
responsibility, trust, and  
family are taught and lived!**

1325 G STREET, NW, SUITE 500  
WASHINGTON, DC 20005

PHONE: (202) 393-1251  
FAX: (202) 715-1146  
[www.communityofcaring.org](http://www.communityofcaring.org)  
[contact@communityofcaring.org](mailto:contact@communityofcaring.org)

FOUNDED BY THE JOSEPH P. KENNEDY, JR. FOUNDATION

PRSR STD  
U.S. Postage  
PAID  
Washington, DC  
Permit No. 827

winter 2002

**Community of Caring  
was founded by  
Eunice Kennedy Shriver and  
developed by  
a group of  
philosophers,  
educators,  
health specialists,  
legal professionals,  
ethicists,  
policy makers  
and psychologists.**